



DETR's Research and Analysis Bureau
CHIEF ECONOMIST BILL ANDERSON

www.nevadaworkforce.com

NEVADA GOVERNOR
BRIAN SANDOVAL
DETR Director
Don Soderberg



Media Contact:
Mae Worthey, Ed.D
(702) 486.7991 o
(702) 249.6324 c

PRESS RELEASE

For Immediate Release
August 22, 2017

Nevada's Metro Areas Unemployment Rates Up Slightly in July, but down Over the Year

CARSON CITY, NV —Nevada's metro areas saw a slight increase in the unemployment rate in July, but experienced decreases year over year. In Las Vegas, the unemployment rate is up 0.3 of a percentage point to 5.4 percent, while Reno's unemployment rate is up 0.2 of a percentage point to 4.2 percent and is down over the year. Carson City's rate increased by 0.2 of a percentage point to 4.8 percent. The unemployment rates in all counties remain below seven percent.

“For 11 consecutive months, unemployment rates have declined over the year in all 17 of the state's counties, continuing to render good news for the Silver State,” said Bill Anderson, chief economist for Nevada's Department of Employment, Training and Rehabilitation. “Additionally, Las Vegas and Reno have experienced positive job growth, with the addition of 23,400 jobs and 4,900 jobs over the year respectively.”

KEY POINTS

- Las Vegas was the only metro area to realize a seasonally adjusted increase of jobs in July, up 2,000 jobs.
- Year-over-year job growth, Las Vegas': 2.5 percent; Reno: 2.2 percent
- Compared to the first seven months of last year Clark County's labor force is up 13,900; Washoe County's is up 3,000

-##-

[Visit us http://www.nevadaworkforce.com](http://www.nevadaworkforce.com) and Follow us on Twitter: <http://www.twitter.com/NVlabormarket>

ABOUT THE RESEARCH AND ANALYSIS BUREAU

The Research and Analysis Bureau is Nevada's premier source for labor market information. A part of DETR, the Bureau is responsible for creating, analyzing, and reporting Nevada's labor market information, in cooperation with the United States Bureau of Labor Statistics (BLS).



DETR is comprised of the Employment Security Division, Equal Rights Commission, Rehabilitation Division, and the Research and Analysis Bureau. DETR oversees the Nevada JobConnect System to provide training and job placement services to job seekers and to assist employers in hiring practices. It also supports economic development efforts through improving Nevada's workforce.

NEVADA SUB-STATE LABOR MARKET OVERVIEW

July 2017

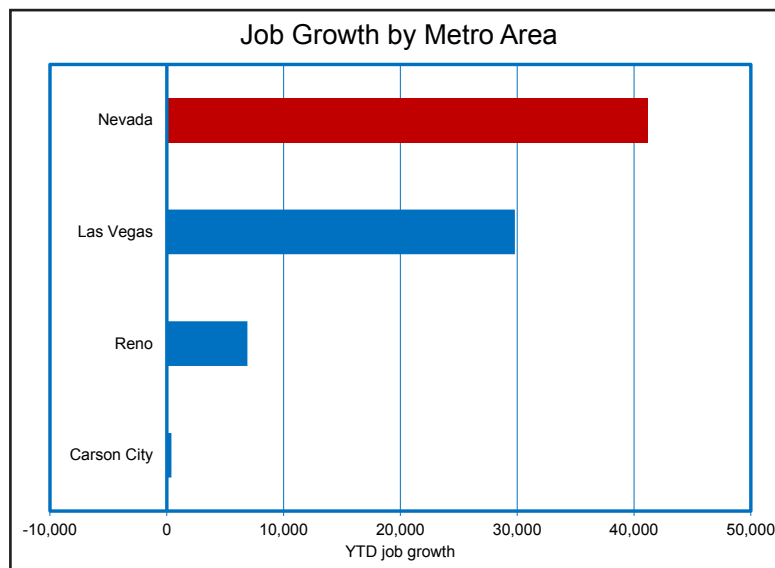
Nevada's largest population centers experienced mixed job growth in July. Job growth was concentrated in Las Vegas, the Silver State's largest metropolitan statistical area (MSA). Las Vegas employment saw a seasonally-adjusted increase of 2,000 jobs, the result of decreasing by 3,700 jobs when 5,700 were expected to be lost. Reno was expected to lose 1,400 jobs over the month, but declined by 1,500, producing a decrease of 100 jobs after seasonal adjustment. Car-

Nevada Nonfarm Jobs: June - July Change

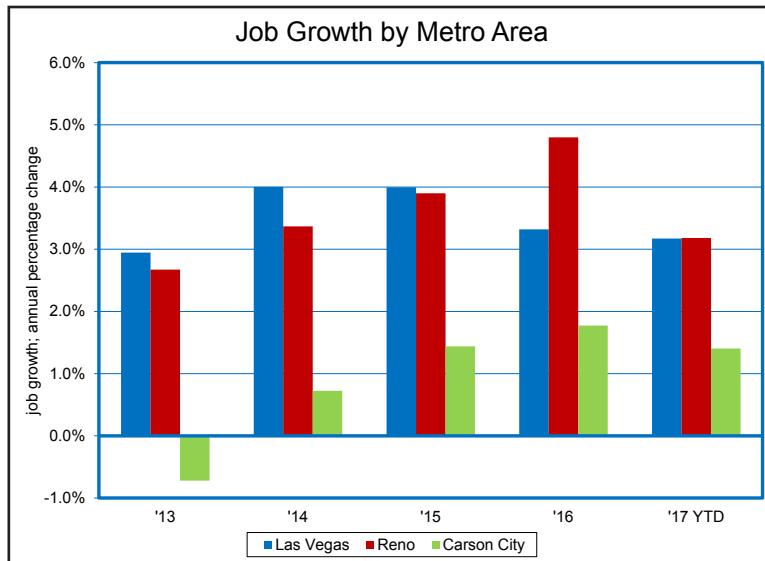
	Unadjusted Change	Expected Seasonal Movement	Seasonally Adjusted Change
Las Vegas	-3,700	-5,700	2,000
Reno	-1,500	-1,400	-100
Carson City	0	100	-100

son City was expected to gain 100 jobs, but realized no change this month, resulting in a seasonally-adjusted decline of 100 jobs.

Year-over-year employment increased or remained neutral across the State's population centers. Statewide, employment grew by 2.7 percent relative to July 2016, translating into 35,700 new jobs. Las Vegas and Reno realized year-over-year job growth at 2.5 percent and 2.2 percent, respectively. Those growth rates translate to 23,400 new jobs in Las Vegas and 4,900 new jobs in Reno. The goods-producing industries increased payrolls by 9,600 jobs in Las Vegas and by 1,700 jobs in Reno¹. The service-providing industries



¹ References to total MSA employment are adjusted for seasonality, whereas references to goods-producing and service-providing industries are not.



gained 17,000 jobs in Las Vegas and 4,300 jobs in Reno. A flat growth rate in Carson City resulted in employment numbers remaining unchanged from last July. Service-providers gained 100 jobs in the region before adjustments were made for seasonality.

The Las Vegas Strip has seen a shift throughout the years with gaming-related revenue dropping, as a percentage of total revenue. In comparison, revenues from non-gaming sources have soared.

Specifically, gaming revenue represents just one-third of total revenue, as of 2016. That compares to nearly 60 percent as recently as 25 years ago. All told, gaming revenue totaled \$5.9 billion last year. This compares to total revenue of \$17.1 billion.

As the industry has diversified, and retail establishments, restaurants, and high-end entertainment have expanded, non-gaming revenue, at \$11.3 billion, now represents about two-thirds of total revenue on the Las Vegas Strip.

This month, we examine the growth/decline in each county's labor force, employment, unemployment and the jobless rate. Estimates show all counties in the Silver State have realized decreases in unemployment

through the first seven months of 2017 relative to a year ago.

Over the same period, 13 counties saw increases in employment. Labor force (those actively involved in the labor market, either employed or actively looking for work) growth is concentrated in the State's two largest population centers. Clark County's labor force is up 13,900, while Washoe's has increased 3,000 compared to the first seven months of last year.

The unemployment rate in every county in the Silver State has declined relative to 2017. In fact, every county has declined by at least one full percentage point. The largest declines in the jobless rate are found in Storey and Lyon, with 2.1 and 1.9 percentage points respectively. Clark's rate is down 1.1 percentage points, while Washoe's is off by 1.2 percentage points relative to the first seven months of 2016.

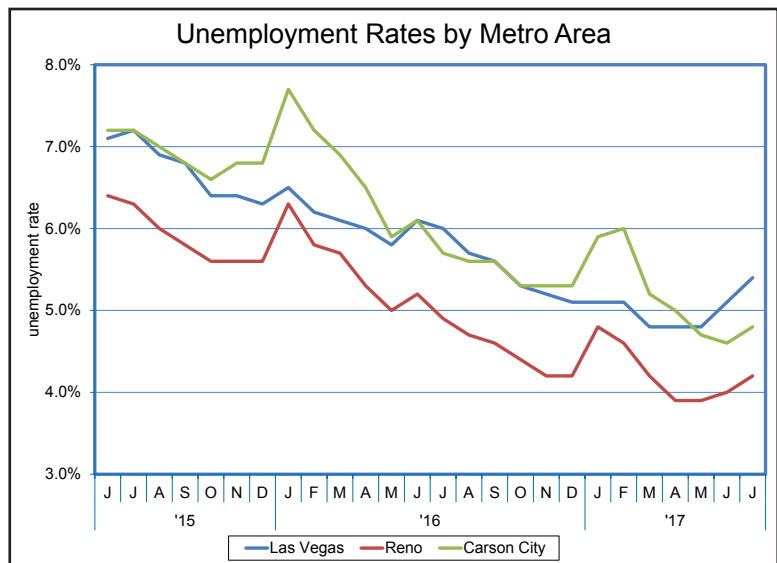
Health care remains a very prominent topic of discussion in the nation as a whole. Americans spend more on health care now than in years past. This month, using Regional Economic Modeling Inc. (REMI) information, we examine the role of health care spending in the Nevada economy.

For 2017, health care consumption in the Silver State was at \$14.4 billion (in 2009 dollars). This accounted for a 10.3 percent share of gross domestic product (GDP). This compares to the national share of 11.9 percent.

At the county level, the share ranged from 17.6 percent (Lyon County) to 0.6 percent (Eureka County). As for Nevada's population centers, Carson City, at 9.8 percent, falls below the Statewide average. Clark County's share is nearly identical that of the State at 10.2 percent. Washoe County is a bit above the Statewide average at 11.7 percent.

At the county level, initial claims for unemployment insurance (UI) continue to reflect the declines seen Statewide. Through July, initial claims are down in all but one of Nevada's counties compared to the same period last year. Twelve of these counties have seen claims fall by ten percent or more compared to last year at this time, with the largest decline of 52 percent coming from Lander County. The largest nominal declines have come in Nevada's largest counties, with Clark falling by 3,690 claims and Washoe falling by 900 claims compared to last year's total. Only Storey County has seen an increase of initial claims from last year, albeit very minor.

Metro area unemployment rates increased on a month-over-month basis but decreased year-over-year². In Las Vegas the unemployment rate is at 5.4 percent, up 0.3 per-



centage point from June, and down 0.6 percentage point from July of last year. Reno's unemployment rate is up 0.2 percentage point over-the-month, to 4.2 percent, and is down 0.7 percentage point over-the-year. Carson City's rate increased by 0.2 percentage point, relative to last month, but declined by 0.9 percentage point from last July, resulting in a 4.8 percent unemployment rate this month.

For 11 consecutive months, unemployment rates have declined on a over-the-year basis in all 17 of the State's counties. This month, all counties remain below seven percent unemployment. Rate declines ranged from 1.8 percentage points (Eureka) to 0.4 percentage point (White Pine). Eureka (3.3 percent) marked the State's lowest unemployment rate and Nye (6.5 percent) experienced the State's highest. Esmeralda, White Pine, and Elko (all at 3.9 percent), also maintain relatively low unemployment rates this month.

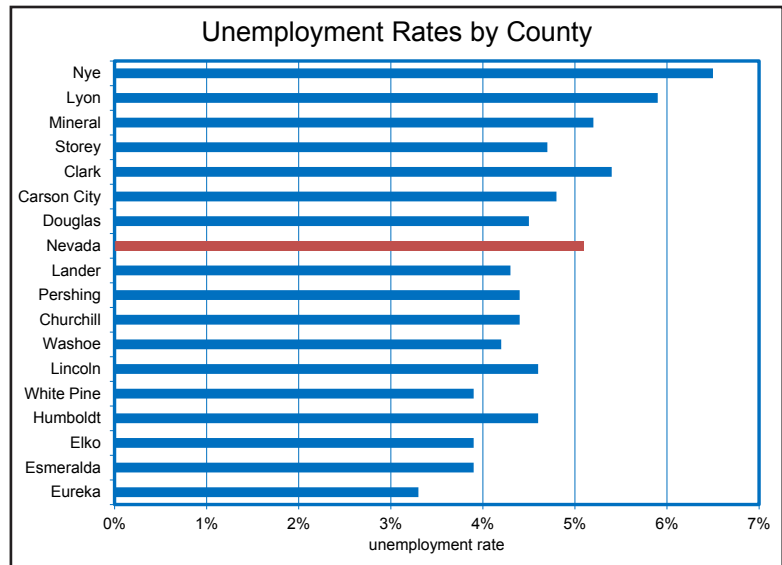
Over-the-year online job posting activity

² The State's seasonally adjusted unemployment rate is 4.8 percent in July, up from 4.7 percent in June and down from 5.6 percent in July 2016. Unemployment rates for the State's metropolitan areas and counties reported here are not adjusted for seasonality. Hence, comparisons to the State's seasonally adjusted rate should be avoided. Legitimate comparisons, however, can be made to the State's unadjusted rate - 5.1 percent in July, up from 4.9 percent in June and down from 5.8 percent in July 2016.

Unemployment Insurance Initial Claims By County			
	July 2017 (Year-to-Date)		Change
	2017	2016	
	Clark	66,825	
Washoe	10,461	11,373	-912
Carson City	1,393	1,685	-292
Elko	837	1,084	-247
Lyon	1,467	1,648	-181
Douglas	882	1,045	-163
Churchill	466	610	-144
Humboldt	310	436	-126
Nye	825	933	-108
Lander	96	201	-105
Mineral	98	127	-29
Pershing	68	96	-28
Lincoln	55	75	-20
White Pine	164	179	-15
Eureka	19	27	-8
Esmeralda	23	25	-2
Storey	53	36	17

*County level totals are not directly comparable to Statewide monthly totals due to reporting differences.

is up in 13 of 17 counties in July³. Elko has seen the largest nominal change over last year, with 920 more ads, totaling 4,100 ads year-to-date. Douglas (+780) and Nye (+510) also saw significant growth in online ads from a year ago. Washoe declined more than any other county, with 2,300 less ads than in July last year. Clark postings have reached 91,000 ads through July this year, but are down by 1,300 ads over-the-year. Reduced ad volume in the Silver State's largest population centers is likely the consequence of posting fees that major online job posting companies are imposing on employers utilizing their services.



	July 2017 (Year-to-Date)		Change
	2017	2016	
Elko	4,122	3,202	920
Douglas	2,844	2,064	780
Nye	1,751	1,237	514
White Pine	1,078	671	407
Lyon	1,656	1,385	271
Lincoln	381	175	206
Humboldt	1,106	918	188
Mineral	473	293	180
Esmeralda	190	61	129
Pershing	248	152	96
Lander	311	231	80
Storey	98	66	32
Eureka	152	122	30
Carson City	4,849	4,953	-104
Churchill	1,372	1,587	-215
Clark	90,960	92,252	-1,292
Washoe	21,368	23,635	-2,267

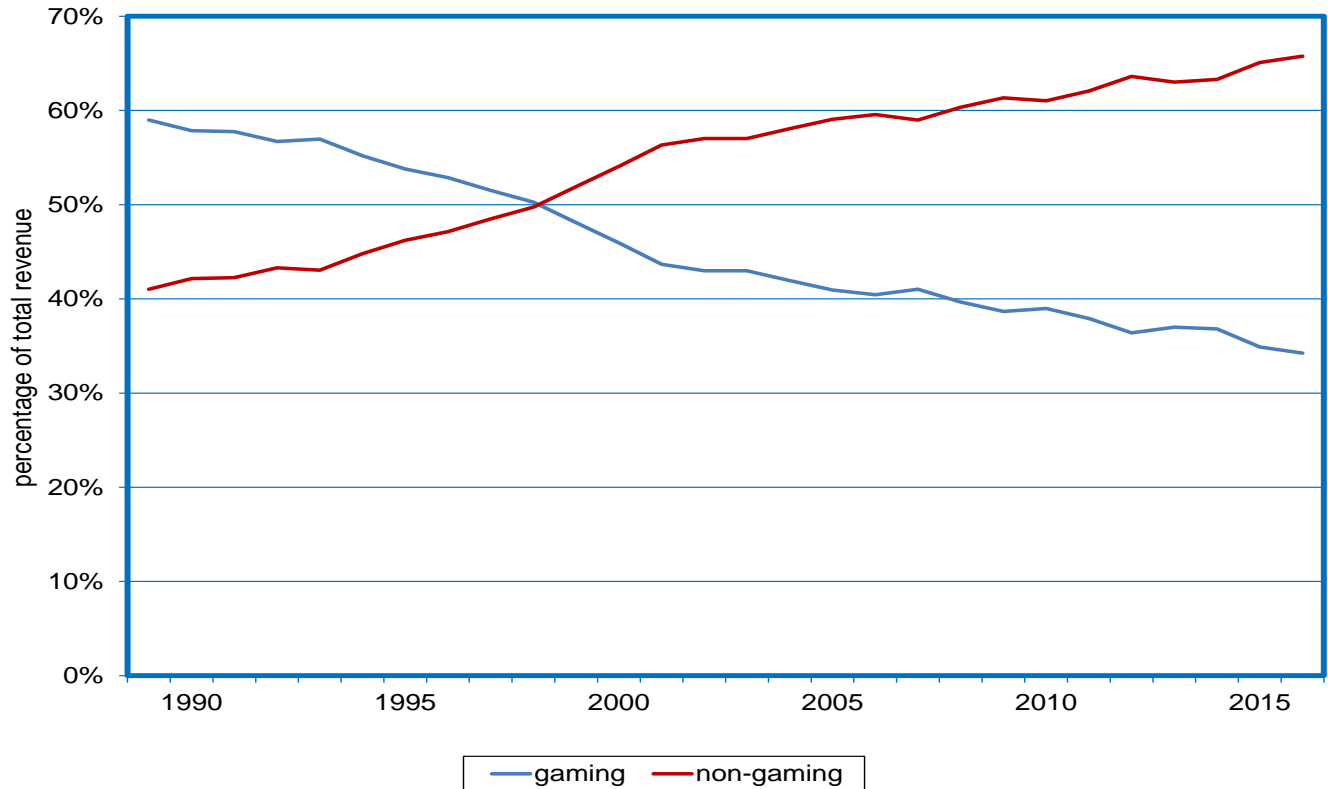
³ Online job postings are obtained through DETR's Silver State Solutions initiative. Online job posting volume does not necessarily correlate with the level of job openings or hiring. Internal company hiring and union hiring are often not captured by online ads. High ad volume often occurs for occupations/industries that are having difficulty finding qualified candidates, high turnover positions/recurring openings, or when companies are building large candidate pools. Online job postings should only be used with caution when developing/analyzing time series trends due to the constant changes in the rate of online advertising usage and in the methods used for collecting the data.

Nevada Sub-State Labor Market Briefing: July 2017

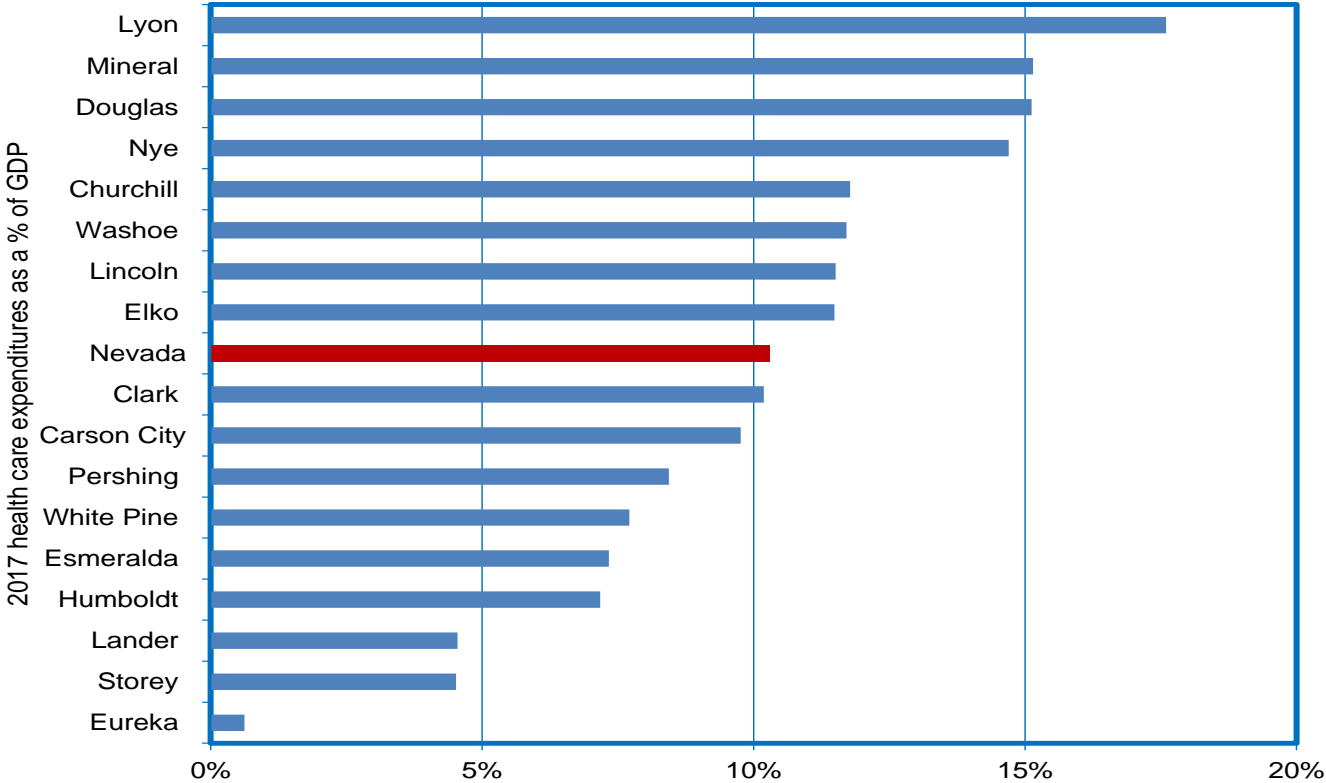
Special Topics Slides



Las Vegas Strip Gaming-Related Revenue Continues Declining as a Percentage of Total Revenue



Lyon and Mineral County Have Highest Share of GDP Spent on Health Care; Statewide Average = 10.3%; Washoe at 11.7%; Clark at 10.2%



So Far This Year Employment Up in 14 of 17 Counties; Unemployment Down Across the Board

Year-to-Date (through July) Change vs. 2016

County	labor force	employment	unemployment	unemployment rate
Clark	13,946	24,846	-10,900	-1.1%
Washoe	3,028	5,639	-2,611	-1.2%
Eureka	65	83	-18	-1.9%
Lincoln	20	38	-18	-0.9%
Mineral	6	38	-32	-1.6%
Storey	4	44	-40	-2.1%
Elko	2	306	-304	-1.1%
Pershing	-1	46	-47	-1.8%
Esmeralda	-11	-2	-9	-1.6%
White Pine	-13	28	-41	-0.9%
Lander	-42	22	-64	-1.9%
Carson City	-107	244	-351	-1.4%
Douglas	-141	134	-275	-1.2%
Humboldt	-148	-4	-144	-1.6%
Nye	-163	86	-249	-1.5%
Churchill	-315	-154	-161	-1.4%
Lyon	-643	-178	-465	-1.9%





NEVADA

Employment & Unemployment

July 2017

Employment Growth:

(Employment in thousands)

	M/M	Y/Y	Y/Y%
Nevada	5.3	35.7	2.7%
Nevada (Not Seasonally Adjusted)	-6.1	38.4	3.0%
Las Vegas MSA	2.0	23.4	2.5%
Reno\Sparks MSA	-0.1	4.9	2.2%
Carson City MSA	-0.1	0.0	0.0%

Unemployment Rates:

Nevada (Seasonally Adjusted)	4.8%
Nevada	5.1%
Las Vegas MSA	5.4%
Reno\Sparks MSA	4.2%
Carson City MSA	4.8%

Employment estimates are produced by the Current Employment Statistics program.

Labor Force estimates are produced by the Local Area Unemployment Statistics program.

Research and Analysis Bureau, Nevada Department of Employment, Training and Rehabilitation
operates these programs in cooperation with the U.S. Department of Labor, Bureau of Labor Statistics.

Telephone (775) 684-0450

Nevada Labor Force Summary

(Estimates In Thousands)

LABOR FORCE SUMMARY	Jul-17	Jul-16	CHANGE	% CHANGE	Jun-17
NEVADA STATEWIDE Seasonally Adjusted					
LABOR FORCE	1442.4	1426.8	15.6	1.1%	1441.5
EMPLOYMENT	1373.1	1346.7	26.4	2.0%	1373.6
UNEMPLOYMENT	69.3	80.1	-10.8	-13.5%	67.9
UNEMPLOYMENT RATE	4.8%	5.6%	-----	-----	4.7%
NEVADA STATEWIDE Non Seasonally Adjusted					
LABOR FORCE	1451.3	1435.6	15.7	1.1%	1444.4
EMPLOYMENT	1377.0	1352.1	24.9	1.8%	1374.2
UNEMPLOYMENT	74.3	83.6	-9.2	-11.0%	70.1
UNEMPLOYMENT RATE	5.1%	5.8%	-----	-----	4.9%
Las Vegas-Paradise MSA Includes Clark County					
LABOR FORCE	1069.0	1055.2	13.8	1.3%	1061.7
EMPLOYMENT	1011.7	991.6	20.1	2.0%	1007.7
UNEMPLOYMENT	57.3	63.6	-6.3	-9.9%	54.0
UNEMPLOYMENT RATE	5.4%	6.0%	-----	-----	5.1%
Reno-Sparks MSA Includes Washoe and Storey Counties					
LABOR FORCE	234.9	231.9	3.0	1.3%	234.6
EMPLOYMENT	225.0	220.4	4.6	2.1%	225.2
UNEMPLOYMENT	9.9	11.5	-1.6	-13.7%	9.4
UNEMPLOYMENT RATE	4.2%	4.9%	-----	-----	4.0%
Carson City MSA					
LABOR FORCE	24.9	25.2	-0.2	-1.0%	24.7
EMPLOYMENT	23.7	23.7	0.0	-0.1%	23.6
UNEMPLOYMENT	1.2	1.4	-0.2	-16.1%	1.1
UNEMPLOYMENT RATE	4.8%	5.7%	-----	-----	4.6%

UNEMPLOYMENT RATES BASED ON UNROUNDED DATA

Employment adjusted by census relationships to reflect number of persons by place of residence.

Information compiled by DETR's Research & Analysis Bureau

Establishment Based Industrial Employment Nevada - Seasonally Adjusted

(Estimates In Thousands)

	Jul-17	Jul-16	CHANGE	% CHANGE	Jun-17
<u>Total All Industries</u>	1342.7	1307.0	35.7	2.7%	1337.4

Nevada- Non-Seasonally Adjusted

	Jul-17	Jul-16	CHANGE	% CHANGE	Jun-17
<u>Total All Industries</u>	1338.3	1299.9	38.4	3.0%	1344.4

Las Vegas-Paradise MSA *

	Jul-17	Jul-16	CHANGE	% CHANGE	Jun-17
<u>Total All Industries</u>	977.1	953.7	23.4	2.5%	975.1

Reno/Sparks MSA *

	Jul-17	Jul-16	CHANGE	% CHANGE	Jun-17
<u>Total All Industries</u>	225.9	221.0	4.9	2.2%	226.0

Carson City MSA *

	Jul-17	Jul-16	CHANGE	% CHANGE	Jun-17
<u>Total All Industries</u>	28.8	28.8	0.0	0.0%	28.9

* Seasonally Adjusted

Non-Seasonally Adjusted Establishment Based Industrial Employment Las Vegas-Paradise MSA

Includes Clark County
(Estimates In Thousands)

	Jul-17	Jul-16	CHANGE	% CHANGE	Jun-17
Total All Industries	973.4	946.8	26.6	2.8%	977.1
Goods Producing	87.3	77.7	9.6	12.4%	86.9
Natural Resources & Mining	0.4	0.3	0.1	33.3%	0.4
Construction	64.4	55.2	9.2	16.7%	63.9
Construction of Buildings	9.0	8.3	0.7	8.4%	9.1
Specialty Trade Contractors	49.9	41.0	8.9	21.7%	49.3
Building Foundation & Exterior Contractors	13.3	10.2	3.1	30.4%	12.8
Building Finishing Contractors	13.3	10.9	2.4	22.0%	13.2
Manufacturing	22.5	22.2	0.3	1.4%	22.6
Durable Goods	12.6	12.6	0.0	0.0%	12.8
Other Miscellaneous Manufacturing	4.1	4.1	0.0	0.0%	4.1
Non-durable Goods	9.9	9.6	0.3	3.1%	9.8
Service Providing	886.1	869.1	17.0	2.0%	890.2
Private Service Providing	790.5	774.3	16.2	2.1%	794.1
Trade, Transportation & Utilities	167.4	169.7	-2.3	-1.4%	169.7
Wholesale	21.3	21.7	-0.4	-1.8%	21.6
Retail	107.1	106.2	0.9	0.8%	108.2
Food & Beverage Stores	17.8	17.4	0.4	2.3%	17.8
Health and Personal Care Stores	7.9	7.6	0.3	3.9%	7.9
Trans, Warehousing & Utilities	39.0	41.8	-2.8	-6.7%	39.9
Utilities	2.6	2.7	-0.1	-3.7%	2.6
Transportation & Warehousing	36.4	39.1	-2.7	-6.9%	37.3
Air	6.5	6.4	0.1	1.6%	6.5
Transit and Ground Passenger	12.9	13.4	-0.5	-3.7%	13.3
Taxi and Limousine Service	9.7	9.9	-0.2	-2.0%	9.7
Information	10.9	11.1	-0.2	-1.8%	11.1
Telecommunications	2.8	2.9	-0.1	-3.4%	2.8
Financial Activities	50.9	48.2	2.7	5.6%	50.7
Finance and Insurance	28.0	26.6	1.4	5.3%	27.9
Credit Intermediation & Related	15.8	14.7	1.1	7.5%	15.8
Real Estate and Rental and Leasing	22.9	21.6	1.3	6.0%	22.8
Professional & Business Services	141.9	133.1	8.8	6.6%	140.9
Professional, Scientific and Technical	40.4	39.1	1.3	3.3%	40.2
Management of Companies	20.4	19.8	0.6	3.0%	20.2
Administrative & Support and Waste Mgt.	81.1	74.2	6.9	9.3%	80.5
Administrative and Support Services	79.0	71.5	7.5	10.5%	78.5
Employment Services	15.1	14.1	1.0	7.1%	15.5
Other Support Services	10.5	9.2	1.3	14.1%	10.8
Education and Health Services	94.9	91.3	3.6	3.9%	95.5
Health Care and Social Assistance	86.3	82.0	4.3	5.2%	86.0
Ambulatory Health Care Services	40.3	37.0	3.3	8.9%	39.7
Hospitals	21.1	20.1	1.0	5.0%	21.1
Leisure and Hospitality	291.1	289.7	1.4	0.5%	292.6
Arts, Entertainment and Recreation	22.2	21.8	0.4	1.8%	22.0
Accommodation and Food Service	268.9	267.9	1.0	0.4%	270.6
Accommodation	168.1	167.9	0.2	0.1%	168.4
Casino Hotels and Gaming	159.1	159.5	-0.4	-0.3%	159.7
Casino Hotels	154.0	154.6	-0.6	-0.4%	154.6
Gaming Industries	5.1	4.9	0.2	4.1%	5.1
Food Services and Drinking Places	100.8	100.0	0.8	0.8%	102.2
Full-Service Restaurants	49.7	49.9	-0.2	-0.4%	49.9
Limited-Service Restaurants	37.2	37.7	-0.5	-1.3%	37.3
Other Services	33.4	31.2	2.2	7.1%	33.6
Government	95.6	94.8	0.8	0.8%	96.1
Federal	13.0	12.8	0.2	1.6%	12.9
State	16.7	17.6	-0.9	-5.1%	17.1
Local	65.9	64.4	1.5	2.3%	66.1

Non-Seasonally Adjusted Data.

Data may not add due to rounding. Employment by place of work. Does not coincide with labor force concept. Includes multiple job holders.

Non-Seasonally Adjusted Establishment Based Industrial Employment

Reno-Sparks MSA

Includes Washoe and Storey Counties

(Estimates In Thousands)

	Jul-17	Jul-16	CHANGE	% CHANGE	Jun-17
<u>Total All Industries</u>	225.0	219.0	6.0	2.7%	226.5
<u>Goods Producing</u>	31.2	29.5	1.7	5.8%	30.6
Natural Resources & Mining	0.2	0.2	0.0	0.0%	0.2
Construction	16.2	15.2	1.0	6.6%	15.7
Manufacturing	14.8	14.1	0.7	5.0%	14.7
Miscellaneous Manufacturing	2.4	2.3	0.1	4.3%	2.4
<u>Service Providing</u>	193.8	189.5	4.3	2.3%	195.9
<u>Private Service Providing</u>	166.7	162.9	3.8	2.3%	166.1
Trade, Transportation & Utilities	50.9	49.8	1.1	2.2%	51.0
Wholesale	9.1	9.1	0.0	0.0%	9.1
Retail	23.5	22.8	0.7	3.1%	23.5
Food & Beverage Stores	3.3	3.2	0.1	3.1%	3.2
Trans, Warehousing & Utilities	18.3	17.9	0.4	2.2%	18.4
Information	2.2	2.1	0.1	4.8%	2.2
Financial Activities	10.7	10.5	0.2	1.9%	10.6
Finance and Insurance	6.3	6.2	0.1	1.6%	6.3
Professional & Business Services	31.3	30.7	0.6	2.0%	30.9
Administrative & Support and Waste Mgt.	17.9	16.9	1.0	5.9%	17.7
Education and Health Services	26.5	25.5	1.0	3.9%	26.4
Leisure and Hospitality	38.8	38.1	0.7	1.8%	38.7
Accommodation and Food Service	32.9	32.3	0.6	1.9%	32.9
Accommodation	16.1	16.2	-0.1	-0.6%	16.2
Casino Hotels	14.6	15.0	-0.4	-2.7%	14.7
Food Services and Drinking Places	16.8	16.1	0.7	4.3%	16.7
Other Services	6.3	6.2	0.1	1.6%	6.3
Government	27.1	26.6	0.5	1.9%	29.8
Federal	3.7	3.6	0.1	2.8%	3.7
State	9.7	9.7	0.0	0.0%	9.6
Local	13.7	13.3	0.4	3.0%	16.5

Non-Seasonally Adjusted Data.

Data may not add due to rounding. Employment by place of work. Does not coincide with labor force concept. Includes multiple job holders.

Non-Seasonally Adjusted Establishment Based Industrial Employment

Carson City MSA

Includes Carson City
(Estimates In Thousands)

	Jul-17	Jul-16	CHANGE	% CHANGE	Jun-17
Total All Industries	29.2	29.1	0.1	0.3%	29.2
<i>Goods Producing</i>	3.8	3.8	0.0	0.0%	3.8
Manufacturing	2.4	2.5	-0.1	-4.0%	2.4
<i>Service Providing</i>	25.4	25.3	0.1	0.4%	25.4
<i>Private Service Providing</i>	16.0	15.9	0.1	0.6%	16.0
Trade, Transportation & Utilities	4.0	4.0	0.0	0.0%	4.0
Retail	3.2	3.1	0.1	3.2%	3.2
Professional & Business Services	1.9	2.0	-0.1	-5.0%	1.9
Leisure and Hospitality	3.6	3.6	0.0	0.0%	3.6
Government	9.4	9.4	0.0	0.0%	9.4
Federal	0.6	0.6	0.0	0.0%	0.6
State	6.8	6.9	-0.1	-1.4%	6.9
Local	2.0	1.9	0.1	5.3%	1.9

Non-Seasonally Adjusted Data.

Data may not add due to rounding. Employment by place of work. Does not coincide with labor force concept. Includes multiple job holders.



2017 Industrial Employment (Estimates in Thousands)

Nevada Statewide (SA)													
	JAN	FEB	MAR	APR	MAY	JUN	JUL	AUG	SEP	OCT	NOV	DEC	AVERAGE
Total All Industries	1321.5	1325.9	1325.7	1333.6	1331.5	1337.4	1342.7						1331.2
Nevada Statewide (NSA)													
	JAN	FEB	MAR	APR	MAY	JUN	JUL	AUG	SEP	OCT	NOV	DEC	AVERAGE
Total All Industries	1304.2	1312.7	1318.9	1332.4	1339.4	1344.4	1338.3						1327.2
Las Vegas MSA (SA)													
	JAN	FEB	MAR	APR	MAY	JUN	JUL	AUG	SEP	OCT	NOV	DEC	AVERAGE
Total All Industries	967.2	968.2	967.8	972.1	974.3	975.1	977.1						971.7
Reno/Sparks MSA (SA)													
	JAN	FEB	MAR	APR	MAY	JUN	JUL	AUG	SEP	OCT	NOV	DEC	AVERAGE
Total All Industries	224.7	224.9	224.5	225.2	224.8	226.0	225.9						225.1
Carson City MSA (SA)													
	JAN	FEB	MAR	APR	MAY	JUN	JUL	AUG	SEP	OCT	NOV	DEC	AVERAGE
Total All Industries	29.1	29.1	29.0	29.1	29.0	28.9	28.8						29.0

updated Jul-17

(NSA)-Non-Seasonally Adjusted Data.

Data may not add due to rounding. Employment by place of work. Does not coincide with labor force concept. Includes multiple job holders.



Non-Seasonally Adjusted Establishment Based Industrial Employment

Las Vegas-Paradise MSA

	JAN	FEB	MAR	APR	MAY	JUN	JUL	AUG	SEP	OCT	DEC	AVERAGE
Total All Industries	957.2	961.9	965.7	973.8	978.4	977.1	973.4					969.6
Goods Producing	80.0	80.0	81.7	84.1	84.1	86.9	87.3					83.4
Natural Resources & Mining	0.3	0.3	0.3	0.3	0.3	0.4	0.4					0.3
Construction	57.5	57.5	59.1	61.5	61.4	63.9	64.4					60.8
Construction of Buildings	8.6	8.7	8.8	8.8	8.9	9.1	9.0					8.8
Specialty Trade Contractors	43.2	43.2	44.9	47.2	47.0	49.3	49.9					46.4
Building Foundation & Exterior Contrac	10.2	10.5	11.0	12.0	11.9	12.8	13.3					11.7
Building Finishing Contractors	11.9	11.8	12.2	12.6	12.4	13.2	13.3					12.5
Manufacturing	22.2	22.2	22.3	22.3	22.4	22.6	22.5					22.4
Durable Goods	12.6	12.5	12.6	12.6	12.6	12.8	12.6					12.6
Other Miscellaneous Manufacturing	4.1	4.1	4.1	4.1	4.1	4.1	4.1					4.1
Non-durable Goods	9.6	9.7	9.7	9.7	9.8	9.8	9.9					9.7
Service Providing	877.2	881.9	884.0	889.7	894.3	890.2	886.1					886.2
Private Service Providing	776.9	778.5	780.1	786.8	791.4	791.4	790.5					785.5
Trade, Transportation & Utilities	169.9	167.5	166.7	166.9	168.0	169.7	167.4					168.0
Wholesale	21.6	21.5	21.6	21.1	21.5	21.6	21.3					21.5
Retail	107.1	105.0	104.9	105.8	106.8	108.2	107.1					106.4
Food & Beverage Stores	17.4	17.4	17.4	17.5	17.6	17.8	17.8					17.6
Health and Personal Care Stores	7.7	7.7	7.7	7.8	7.8	7.9	7.9					7.8
Trans, Warehousing & Utilities	41.2	41.0	40.2	40.0	39.7	39.9	39.0					40.1
Utilities	2.6	2.6	2.6	2.6	2.6	2.6	2.6					2.6
Transportation & Warehousing	38.6	38.4	37.6	37.4	37.1	37.3	36.4					37.5
Air	6.4	6.4	6.5	6.5	6.5	6.5	6.5					6.5
Transit and Ground Passenger	13.6	13.6	13.6	13.6	13.4	13.3	12.9					13.0
Taxi and Limousine Service	10.0	9.9	9.9	9.8	9.7	9.7	9.7					9.8
Information	11.0	11.1	10.8	11.0	11.0	11.1	10.9					11.0
Telecommunications	2.9	2.9	2.8	2.8	2.9	2.8	2.8					2.8
Financial Activities	49.1	49.9	49.9	50.7	50.7	50.7	50.9					50.3
Finance and Insurance	27.3	27.6	27.5	27.9	27.6	27.9	28.0					27.7
Credit Intermediation & Related	15.4	15.4	15.5	15.7	15.6	15.8	15.8					15.6
Real Estate and Rental and Leasing	21.8	22.3	22.4	22.8	23.1	22.8	22.9					22.6
Professional & Business Services	136.9	136.7	137.7	138.8	141.5	140.9	141.9					139.2
Professional, Scientific and Technical	40.1	40.4	40.5	39.9	40.3	40.2	40.4					40.3
Management of Companies	19.6	19.7	19.6	19.9	20.1	20.2	20.4					19.9
Administrative & Support and Waste Mgt.	77.2	76.6	77.6	79.0	81.1	80.5	81.1					79.0
Administrative and Support Services	75.2	74.6	75.6	77.0	79.1	78.5	79.0					77.0
Employment Services	14.1	13.8	14.3	14.2	15.3	15.5	15.1					14.6
Other Support Services	11.9	10.7	10.9	11.2	11.2	10.8	10.5					11.0
Education and Health Services	92.9	94.4	93.7	94.4	94.6	95.5	94.9					94.3
Health Care and Social Assistance	83.1	84.9	84.6	85.3	85.3	86.0	86.3					85.1
Ambulatory Health Care Services	38.3	39.2	38.9	39.3	39.3	39.7	40.3					39.3
Hospitals	20.5	20.7	20.8	20.9	20.9	21.1	21.1					20.9
Leisure and Hospitality	286.2	287.0	289.7	293.1	293.0	292.6	291.1					290.4
Arts, Entertainment and Recreation	20.6	21.0	21.4	21.6	22.0	22.0	22.2					21.5
Accommodation and Food Service	265.6	266.0	268.3	271.5	271.0	270.6	268.9					268.8
Accommodation	166.3	167.6	167.7	168.1	168.4	168.4	168.1					167.8
Casino Hotels and Gaming	158.0	159.1	159.3	159.6	159.9	159.7	159.1					159.2
Casino Hotels	153.1	154.1	154.3	154.5	154.8	154.6	154.0					154.2
Gaming Industries	4.9	5.0	5.0	5.1	5.1	5.1	5.1					5.0
Food Services and Drinking Places	99.3	98.4	100.6	103.4	102.6	102.2	100.8					101.0
Full-Service Restaurants	49.7	49.2	49.7	50.4	50.0	49.9	49.7					49.8
Limited-Service Restaurants	37.1	36.7	37.1	37.7	37.5	37.3	37.2					37.2
Other Services	30.9	31.9	31.6	31.9	32.6	33.6	33.4					32.3
Government	100.3	103.4	103.9	102.9	102.9	96.1	95.6					100.7
Federal	12.8	12.8	12.8	12.8	12.8	12.9	13.0					12.8
State	17.1	19.9	20.4	19.9	20.1	17.1	16.7					18.7
Local	70.4	70.7	70.7	70.2	70.0	66.1	65.9					69.1

Non-Seasonally Adjusted Data.

updated Jul-17



Non-Seasonally Adjusted Establishment Based Industrial Employment Reno-Sparks MSA

	JAN	FEB	MAR	APR	MAY	JUN	JUL	AUG	SEP	OCT	DEC	AVERAGE
Total All Industries	219.9	222.0	222.7	224.6	225.7	226.5	225.0					223.8
Goods Producing	28.4	28.2	28.4	29.4	29.8	30.6	31.2					29.4
Natural Resources & Mining	0.2	0.2	0.2	0.2	0.2	0.2	0.2					0.2
Construction	13.8	13.5	13.6	14.5	14.9	15.7	16.2					14.6
Manufacturing	14.4	14.5	14.6	14.7	14.7	14.7	14.8					14.6
Miscellaneous Manufacturing	2.4	2.4	2.4	2.4	2.4	2.4	2.4					2.4
Service Providing	191.5	193.8	194.3	195.2	195.9	195.9	193.8					194.3
Private Service Providing	162.5	162.8	163.0	164.7	164.8	166.1	166.7					164.4
Trade, Transportation & Utilities	51.0	50.6	50.4	50.7	50.6	51.0	50.9					50.7
Wholesale	9.2	9.1	9.1	9.0	9.0	9.1	9.1					9.1
Retail	23.5	23.2	23.1	23.5	23.3	23.5	23.5					23.4
Food & Beverage Stores	3.2	3.2	3.2	3.2	3.2	3.2	3.3					3.2
Trans, Warehousing & Utilities	18.3	18.3	18.2	18.2	18.3	18.4	18.3					18.3
Information	2.2	2.2	2.2	2.2	2.2	2.2	2.2					2.2
Financial Activities	10.4	10.4	10.4	10.5	10.5	10.6	10.7					10.5
Finance and Insurance	6.4	6.3	6.3	6.3	6.3	6.3	6.3					6.3
Professional & Business Services	30.3	30.3	30.3	30.7	30.7	30.9	31.3					30.6
Administrative & Support and Waste Mgt.	16.8	16.6	16.6	17.1	17.5	17.7	17.9					17.2
Education and Health Services	25.8	26.0	26.1	26.4	26.3	26.4	26.5					26.2
Leisure and Hospitality	36.9	37.2	37.6	38.2	38.4	38.7	38.8					38.0
Accommodation and Food Service	31.3	31.7	31.7	32.1	32.4	32.9	32.9					32.1
Accommodation	15.6	15.7	15.4	15.5	15.7	16.2	16.1					15.7
Casino Hotels	14.2	14.3	14.3	14.3	14.4	14.7	14.6					14.4
Food Services and Drinking Places	15.7	16.0	16.3	16.6	16.7	16.7	16.8					16.4
Other Services	5.9	6.1	6.0	6.0	6.1	6.3	6.3					6.1
Government	29.0	31.0	31.3	30.5	31.1	29.8	27.1					30.0
Federal	3.7	3.7	3.7	3.7	3.7	3.7	3.7					3.7
State	9.8	10.8	11.1	11.0	10.9	9.6	9.7					10.4
Local	15.5	16.5	16.5	15.8	16.5	16.5	13.7					15.9

Non-Seasonally Adjusted Data.

updated Jul-17



Non-Seasonally Adjusted Establishment Based Industrial Employment Carson City MSA

	JAN	FEB	MAR	APR	MAY	JUN	JUL	AUG	SEP	OCT	DEC	AVERAGE
Total All Industries	28.3	28.6	28.7	29.0	29.2	29.2	29.2					28.9
<i>Goods Producing</i>	<i>3.6</i>	<i>3.6</i>	<i>3.6</i>	<i>3.7</i>	<i>3.7</i>	<i>3.8</i>	<i>3.8</i>					<i>3.7</i>
Manufacturing	2.5	2.5	2.5	2.4	2.4	2.4	2.4					2.4
<i>Service Providing</i>	<i>24.7</i>	<i>25.0</i>	<i>25.1</i>	<i>25.3</i>	<i>25.5</i>	<i>25.4</i>	<i>25.4</i>					<i>25.2</i>
<i>Private Service Providing</i>	<i>15.4</i>	<i>15.5</i>	<i>15.6</i>	<i>15.8</i>	<i>15.9</i>	<i>16.0</i>	<i>16.0</i>					<i>15.7</i>
Trade, Transportation & Utilities	4.0	3.9	3.9	4.0	4.0	4.0	4.0					4.0
Retail	3.2	3.1	3.1	3.2	3.2	3.2	3.2					3.2
Professional & Business Services	1.8	1.8	1.9	1.9	1.9	1.9	1.9					1.9
Leisure and Hospitality	3.4	3.5	3.5	3.5	3.6	3.6	3.6					3.5
Government	9.3	9.5	9.5	9.5	9.6	9.4	9.4					9.5
Federal	0.5	0.5	0.5	0.5	0.6	0.6	0.6					0.5
State	6.9	7.0	7.0	7.0	7.0	6.9	6.8					6.9
Local	1.9	2.0	2.0	2.0	2.0	1.9	2.0					2.0

Non-Seasonally Adjusted Data.

updated Jul-17

Data may not add due to rounding. Employment by place of work. Does not coincide with labor force concept. Includes multiple job holders.



2017 LABOR FORCE SUMMARY DATA (Estimates in Thousands)

	JAN	FEB	MAR	APR	MAY	JUN	JUL	AUG	SEP	OCT	NOV	DEC	AVG
NEVADA- SA													
LABOR FORCE	1435.6	1438.7	1439.2	1440.2	1441.0	1441.5	1442.4						1439.8
EMPLOYMENT 1/	1364.4	1368.0	1370.7	1372.8	1373.1	1373.6	1373.1						1370.8
UNEMPLOYMENT	71.2	70.7	68.5	67.4	67.9	67.9	69.3						69.0
UNEMPLOYMENT RATE	5.0%	4.9%	4.8%	4.7%	4.7%	4.7%	4.8%						4.8%
NEVADA- NSA													
LABOR FORCE	1428.2	1439.7	1435.7	1436.7	1440.8	1444.3	1451.3						1439.5
EMPLOYMENT	1355.5	1366.7	1368.1	1369.9	1374.0	1374.2	1377.0						1369.3
UNEMPLOYMENT	72.7	73.0	67.6	66.8	66.8	70.1	74.3						70.2
UNEMPLOYMENT RATE	5.1%	5.1%	4.7%	4.6%	4.6%	4.9%	5.1%						4.9%
LAS VEGAS MSA*													
LABOR FORCE	1053.0	1058.8	1053.3	1058.5	1060.8	1061.7	1069.0						1059.3
EMPLOYMENT 1/	999.4	1004.6	1002.8	1007.7	1009.8	1007.7	1011.7						1006.2
UNEMPLOYMENT	53.6	54.2	50.5	50.8	51.0	54.0	57.3						53.1
UNEMPLOYMENT RATE	5.1%	5.1%	4.8%	4.8%	4.8%	5.1%	5.4%						5.0%
RENO MSA*													
LABOR FORCE	231.4	234.2	233.5	233.0	233.9	234.6	234.9						9.9
EMPLOYMENT 1/	220.4	223.4	223.6	223.8	224.7	225.2	225.0						
UNEMPLOYMENT	11.0	10.8	9.9	9.2	9.2	9.4	9.9						9.9
UNEMPLOYMENT RATE	4.8%	4.6%	4.2%	3.9%	3.9%	4.0%	4.2%						100.0%
CARSON CITY MSA *													
LABOR FORCE	24.6	25.0	24.6	24.6	24.8	24.7	24.9						24.7
EMPLOYMENT 1/	23.1	23.5	23.3	23.4	23.6	23.6	23.7						23.5
UNEMPLOYMENT	1.5	1.5	1.3	1.2	1.2	1.1	1.2						1.3
UNEMPLOYMENT RATE	5.9%	6.0%	5.2%	5.0%	4.7%	4.6%	4.8%						5.2%
ELKO MICROPOLITAN AREA *													
LABOR FORCE	27.8	28.3	28.7	27.9	28.1	28.6	28.5						28.3
EMPLOYMENT 1/	26.6	27.2	27.7	26.9	27.1	27.6	27.4						27.2
UNEMPLOYMENT	1.2	1.1	1.0	1.0	1.0	1.0	1.1						1.1
UNEMPLOYMENT RATE	4.3%	4.0%	3.6%	3.4%	3.4%	3.5%	3.8%						3.7%

Note: Unemployment rates are based on unrounded data.

1/ Adjusted by census relationships to reflect number of persons by place of residence.

2/ Clark County

3/ Washoe and Storey Counties

4/ Carson City

5/ Elko and Eureka Counties



2017 LABOR FORCE SUMMARY DATA

	JAN	FEB	MAR	APR	MAY	JUN	JUL	AUG	SEP	OCT	NOV	DEC	AVG
CARSON CITY COUNTY*													
LABOR FORCE	24,606	24,957	24,631	24,631	24,726	24,719	24,914						24,741
EMPLOYMENT	23,146	23,463	23,344	23,405	23,552	23,594	23,706						23,459
UNEMPLOYMENT	1,460	1,494	1,287	1,226	1,174	1,125	1,208						1,282
UNEMPLOYMENT RATE	5.9%	6.0%	5.2%	5.0%	4.7%	4.6%	4.8%						5.2%
CHURCHILL COUNTY*													
LABOR FORCE	10,078	10,378	11,124	10,484	10,565	10,702	10,492						10,546
EMPLOYMENT	9,523	9,879	10,654	10,063	10,131	10,254	10,031						10,076
UNEMPLOYMENT	555	499	470	421	434	448	461						470
UNEMPLOYMENT RATE	5.5%	4.8%	4.2%	4.0%	4.1%	4.2%	4.4%						4.5%
CLARK COUNTY*													
LABOR FORCE	1,053,024	1,058,742	1,053,288	1,058,498	1,060,776	1,061,707	1,069,008						1,059,292
EMPLOYMENT	999,409	1,004,557	1,002,754	1,007,707	1,009,816	1,007,715	1,011,691						1,006,236
UNEMPLOYMENT	53,615	54,185	50,534	50,791	50,960	53,992	57,317						53,056
UNEMPLOYMENT RATE	5.1%	5.1%	4.8%	4.8%	4.8%	5.1%	5.4%						5.0%
DOUGLAS COUNTY*													
LABOR FORCE	22,636	22,956	22,303	21,965	22,222	22,522	22,673						1,086
EMPLOYMENT	21,444	21,748	21,216	20,924	21,167	21,534	21,644						1,086
UNEMPLOYMENT	1,192	1,208	1,087	1,041	1,055	988	1,029						1,086
UNEMPLOYMENT RATE	5.3%	5.3%	4.9%	4.7%	4.7%	4.4%	4.5%						100.0%
ELKO COUNTY*													
LABOR FORCE	26,872	27,279	27,341	26,720	26,957	27,403	27,439						27,144
EMPLOYMENT	25,723	26,179	26,332	25,796	26,034	26,428	26,382						26,125
UNEMPLOYMENT	1,149	1,100	1,009	924	923	975	1,057						1,020
UNEMPLOYMENT RATE	4.3%	4.0%	3.7%	3.5%	3.4%	3.6%	3.9%						3.8%

Note: Unemployment rates are based on unrounded data.

Employment adjusted by census relationships to reflect number of persons by place of residence.



2017 LABOR FORCE SUMMARY DATA

	JAN	FEB	MAR	APR	MAY	JUN	JUL	AUG	SEP	OCT	NOV	DEC	AVG
ESMERALDA COUNTY*													
LABOR FORCE	474	517	604	547	541	519	507						530
EMPLOYMENT	457	500	586	528	524	504	487						512
UNEMPLOYMENT	17	17	18	19	17	15	20						18
UNEMPLOYMENT RATE	3.6%	3.3%	3.0%	3.5%	3.1%	2.9%	3.9%						3.3%
EUREKA COUNTY*													
LABOR FORCE	927	1,074	1,372	1,135	1,143	1,155	1,102						1,130
EMPLOYMENT	888	1,033	1,337	1,101	1,111	1,123	1,066						1,094
UNEMPLOYMENT	39	41	35	34	32	32	36						36
UNEMPLOYMENT RATE	4.2%	3.8%	2.6%	3.0%	2.8%	2.8%	3.3%						3.1%
HUMBOLDT COUNTY*													
LABOR FORCE	7,806	8,193	8,879	8,258	8,335	8,452	8,296						8,317
EMPLOYMENT	7,430	7,808	8,523	7,943	8,022	8,122	7,918						7,967
UNEMPLOYMENT	376	385	356	315	313	330	378						350
UNEMPLOYMENT RATE	4.8%	4.7%	4.0%	3.8%	3.8%	3.9%	4.6%						4.2%
LANDER COUNTY*													
LABOR FORCE	3,086	3,180	3,272	3,102	3,128	3,243	3,216						150
EMPLOYMENT	2,900	3,007	3,118	2,967	2,995	3,111	3,077						150
UNEMPLOYMENT	186	173	154	135	133	132	139						150
UNEMPLOYMENT RATE	6.0%	5.4%	4.7%	4.4%	4.3%	4.1%	4.3%						100.0%
LINCOLN COUNTY*													
LABOR FORCE	1,912	2,028	2,242	2,053	2,078	2,113	2,055						2,069
EMPLOYMENT	1,814	1,928	2,156	1,973	1,997	2,029	1,961						1,980
UNEMPLOYMENT	98	100	86	80	81	84	94						89
UNEMPLOYMENT RATE	5.1%	4.9%	3.8%	3.9%	3.9%	4.0%	4.6%						4.3%

Note: Unemployment rates are based on unrounded data.

Employment adjusted by census relationships to reflect number of persons by place of residence.



2017 LABOR FORCE SUMMARY DATA

	JAN	FEB	MAR	APR	MAY	JUN	JUL	AUG	SEP	OCT	NOV	DEC	AVG
LYON COUNTY*													
LABOR FORCE	20,952	21,306	21,488	21,068	21,215	21,387	21,271						21,241
EMPLOYMENT	19,446	19,830	20,196	19,870	20,066	20,192	20,008						19,944
UNEMPLOYMENT	1,506	1,476	1,292	1,198	1,149	1,195	1,263						1,297
UNEMPLOYMENT RATE	7.2%	6.9%	6.0%	5.7%	5.4%	5.6%	5.9%						6.1%
MINERAL COUNTY*													
LABOR FORCE	1,981	1,981	1,979	1,973	1,972	2,052	2,050						1,998
EMPLOYMENT	1,868	1,865	1,871	1,865	1,872	1,948	1,944						1,890
UNEMPLOYMENT	113	116	108	108	100	104	106						108
UNEMPLOYMENT RATE	5.7%	5.9%	5.5%	5.5%	5.1%	5.1%	5.2%						5.4%
NYE COUNTY*													
LABOR FORCE	15,633	15,847	16,319	16,151	16,237	16,374	16,122						16,098
EMPLOYMENT	14,617	14,828	15,346	15,180	15,256	15,391	15,082						15,100
UNEMPLOYMENT	1,016	1,019	973	971	981	983	1,040						998
UNEMPLOYMENT RATE	6.5%	6.4%	6.0%	6.0%	6.0%	6.0%	6.5%						6.2%
PERSHING COUNTY*													
LABOR FORCE	2,316	2,473	2,808	2,517	2,525	2,633	2,607						118
EMPLOYMENT	2,187	2,337	2,685	2,407	2,419	2,524	2,491						
UNEMPLOYMENT	129	136	123	110	106	109	116						118
UNEMPLOYMENT RATE	5.6%	5.5%	4.4%	4.4%	4.2%	4.1%	4.4%						100.0%
STOREY COUNTY*													
LABOR FORCE	1,896	1,928	1,899	1,906	1,916	1,910	1,911						1,909
EMPLOYMENT	1,789	1,814	1,801	1,811	1,821	1,825	1,821						1,812
UNEMPLOYMENT	107	114	98	95	95	85	90						98
UNEMPLOYMENT RATE	5.6%	5.9%	5.2%	5.0%	5.0%	4.5%	4.7%						5.1%

Note: Unemployment rates are based on unrounded data.

Employment adjusted by census relationships to reflect number of persons by place of residence.



2017 LABOR FORCE SUMMARY DATA

	JAN	FEB	MAR	APR	MAY	JUN	JUL	AUG	SEP	OCT	NOV	DEC	AVG
WASHOE COUNTY*													
LABOR FORCE	229,466	232,238	231,527	231,137	231,949	232,719	232,987						231,718
EMPLOYMENT	218,563	221,542	221,773	222,030	222,835	223,369	223,179						221,899
UNEMPLOYMENT	10,903	10,696	9,754	9,107	9,114	9,350	9,808						9,819
UNEMPLOYMENT RATE	4.8%	4.6%	4.2%	3.9%	3.9%	4.0%	4.2%						4.2%
WHITE PINE COUNTY*													
LABOR FORCE	4,546	4,613	4,545	4,463	4,521	4,738	4,709						4,591
EMPLOYMENT	4,344	4,413	4,362	4,284	4,349	4,564	4,525						4,406
UNEMPLOYMENT	202	200	183	179	172	174	184						185
UNEMPLOYMENT RATE	4.4%	4.3%	4.0%	4.0%	3.8%	3.7%	3.9%						4.0%

Note: Unemployment rates are based on unrounded data.
 Employment adjusted by census relationships to reflect number of persons by place of residence.